

FAN CONTROL

FORWARD POWER ALARM

FORWARD POWER ALARM

REVERSE POWER ALARM

REVERSE POWER METER

+13.8V-FILT

+13.8V-FILT

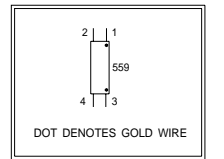
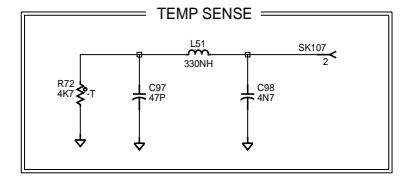
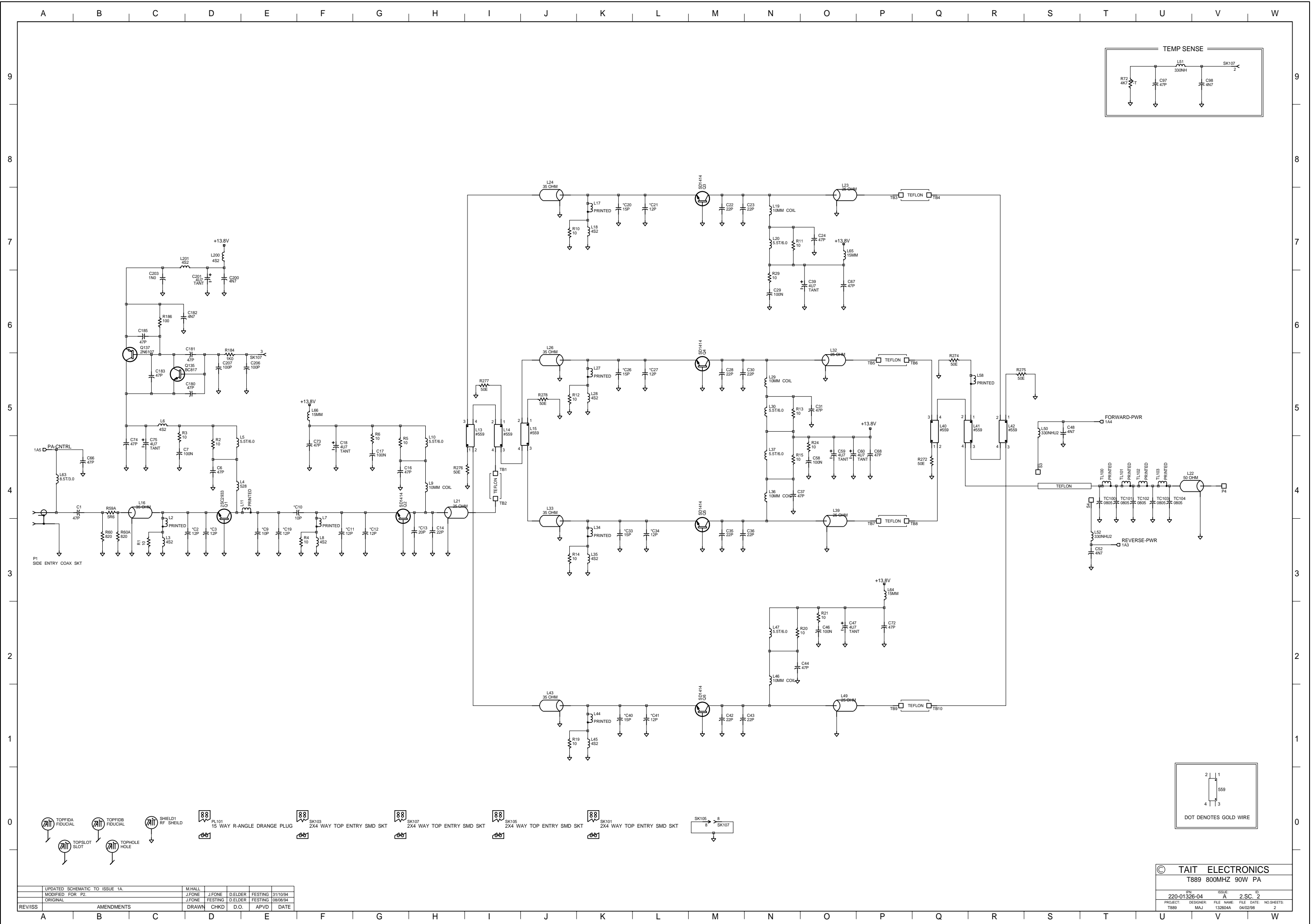
USER	2KVAR8	-
NON_USER	-	2KVAR3299Y

LINK2 REMOVED FOR AUSTRALIAN TYPE APPROVAL.

© TAIT ELECTRONICS  
 T889 800MHZ 90W PA

IPN:	ISSUE:	ID:
220-01326-04	A	2.SC. 1
PROJECT:	DESIGNER:	FILE NAME:
T889	MAJ	132604A
DATE:	NO.SHEETS:	
04/02/98	2	

REV/ISS	AMENDMENTS	DRAWN	CHKD	D.O.	APVD	DATE



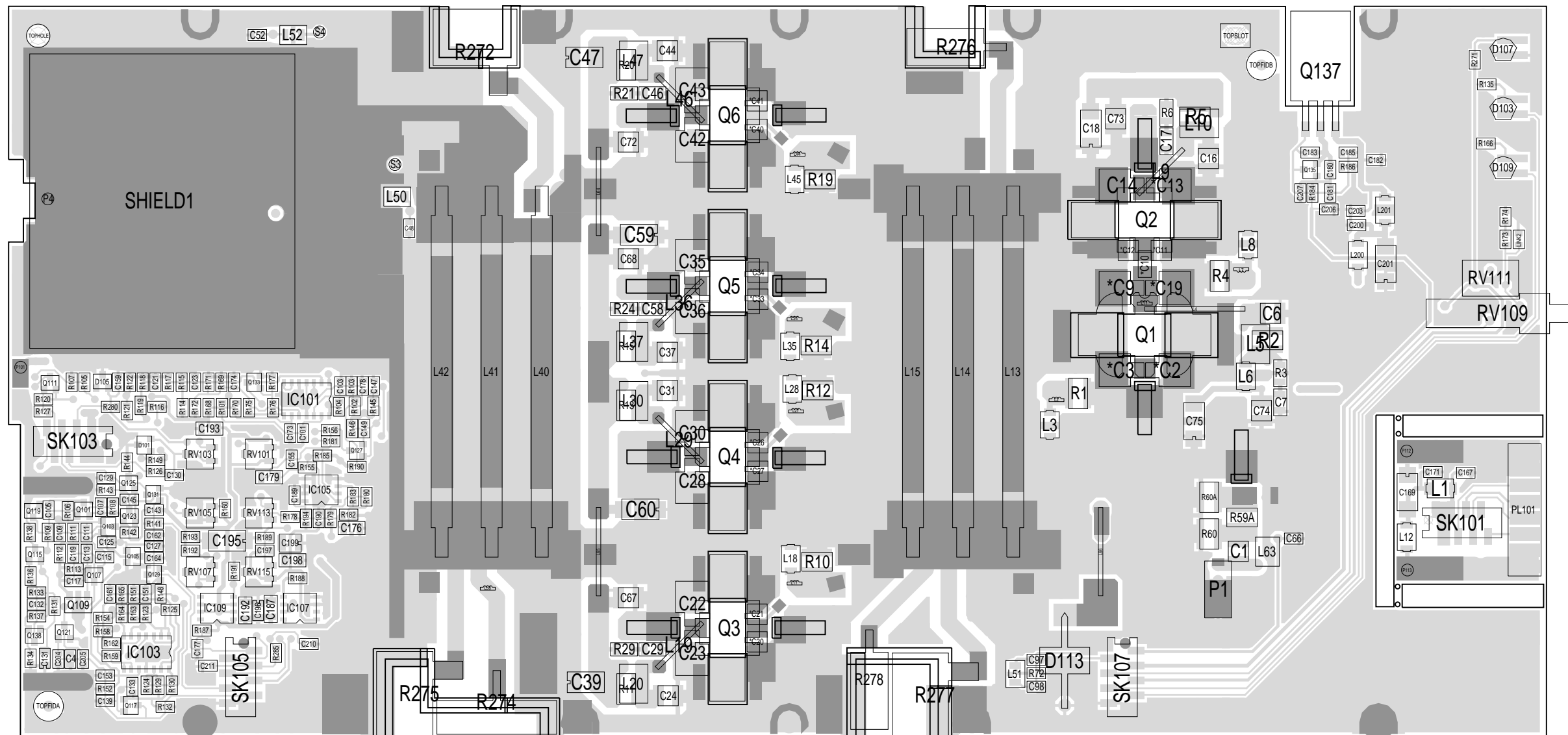
- TOPFIDA FIDUCIAL
- TOPFIDB FIDUCIAL
- SHIELD1 RF SHIELD
- PL101 15 WAY R-ANGLE DRANGE PLUG
- SK103 2X4 WAY TOP ENTRY SMD SKT
- SK107 2X4 WAY TOP ENTRY SMD SKT
- SK105 2X4 WAY TOP ENTRY SMD SKT
- SK101 2X4 WAY TOP ENTRY SMD SKT
- SK105 8 SK107

REV/ISS	AMENDMENTS	DRAWN	CHKD	D.O.	APVD	DATE

UPDATED SCHEMATIC TO ISSUE 1A.	M.HALL
MODIFIED FOR F2.	J.FONE
ORIGINAL	J.FONE
	FESTING
	D.ELDER
	FESTING
	D.ELDER
	FESTING
	06/08/94

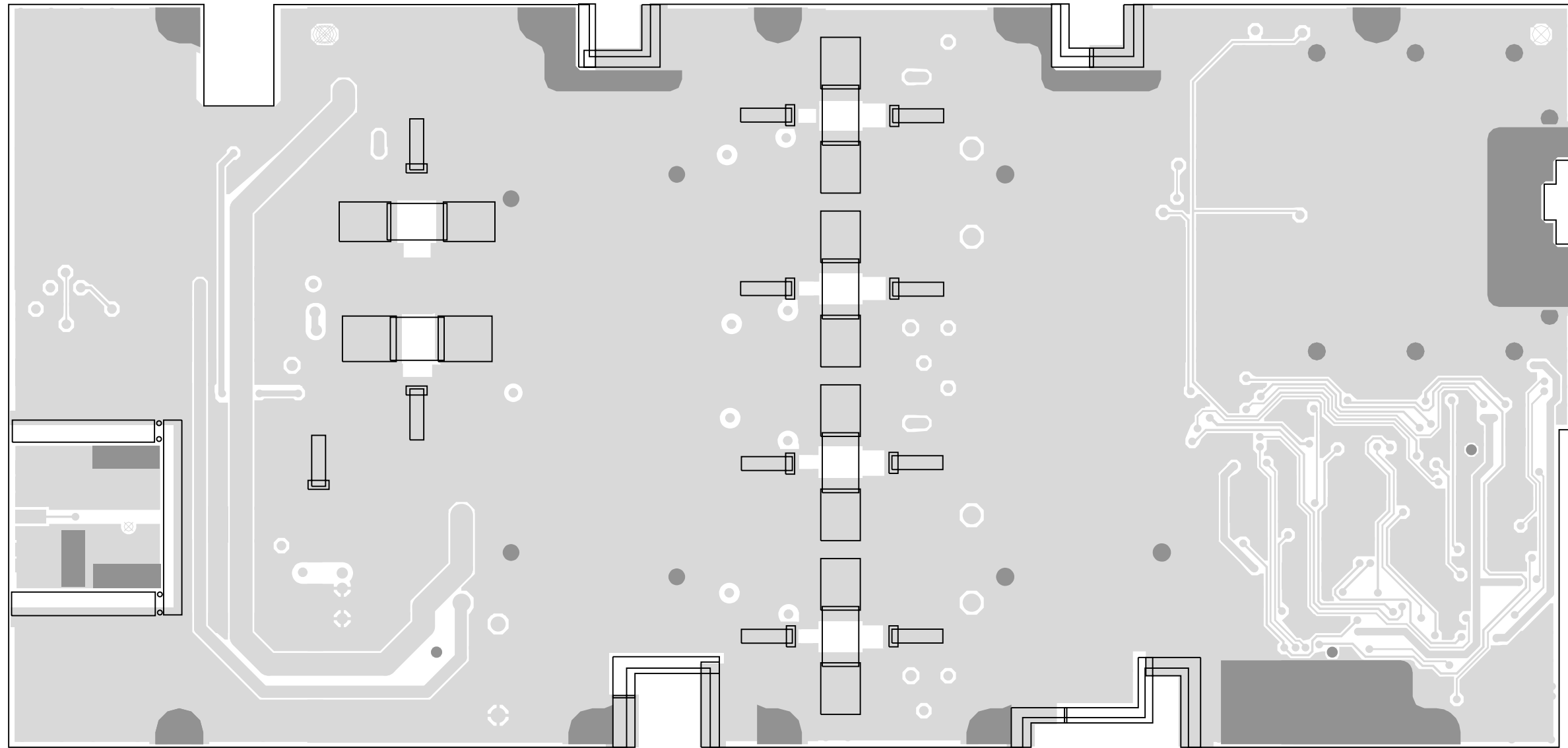
© TAIT ELECTRONICS  
T889 800MHZ 90W PA

SPR	ISSUE	ID
220-01326-04	A	2-SC-2
PROJECT	DESIGNER	FILE NAME
T889	MAJ	132604A
	FILE DATE	NO SHEETS
	04/02/98	2



TAIT ELECTRONICS IPN: 220-01326-04 ISS: 04 ID: 1.TA DATE: 9 Feb 1998  
 T889PA PCB LAYOUT - TOP SIDE

Scale: 1.2:1 ; Rotation: 0 degrees



TAIT ELECTRONICS	IPN: 220-01326-04	ISS: 04	ID: 2.BA	DATE: 9 Feb 1998
T889PA PCB LAYOUT - BOTTOM SIDE				

Scale: 1.2:1 ; Rotation: 0 degrees